



2015 CATALOG

 **gist**
products

NEW FOR 2015



buddha head sculpture XL- pg 47

ALWAYS DESIGNING

Gist is always searching for iconic and creative objects to compliment your space. We have added 30 new designs for 2015 to help you create the perfect environment.



colonial - pg 38



pompei - pg 38



fiore - pg 38



ridgeway - pg 38



tuscany - pg 37



canal - pg 39



moris - pg 39



vienna - pg 40



vaci - pg 41



veneto - pg 42



geneva - pg 41



avalon - pg 42



dixie - pg 43



gianni - pg 44



fornata - pg 45



piada - pg 46



alora - pg 52



bliss - pg 52



corso - pg 52



dalton - pg 51



augusto - pg 52



doloroga - pg 53



fermi - pg 53



mazzini - pg 42



madrid - pg 53



madison - pg 54



sacra - pg 56



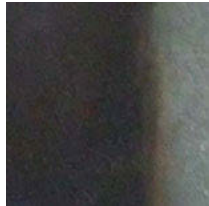
sienna - pg 56



weave - pg 56



absolute



agnone



almond



amatrice



black wash



celano



charcoal



chestnut



gray



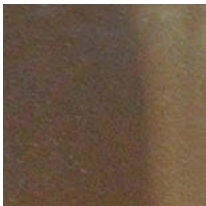
khaki



lanciano



limestone



rodde bronze



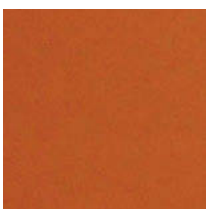
rustic



sierra



smooth mica



terra cotta



wheat



willow



ancient



ash



ash gray



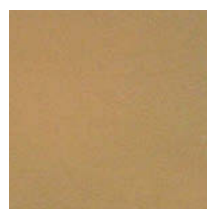
atri



dark ancient



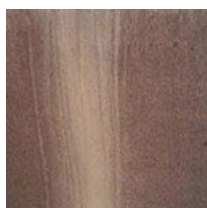
desert rose



dijon



garden green



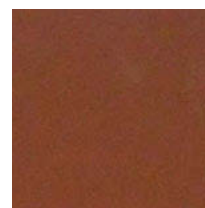
marble



popoli



raw



red rock



spice



straw



super white



taupe

THE GIST COLOR PALETTE

Years of research has yielded a color palette to compliment and beautify any environment. Every design can be matched with any color from the Gist palette. If your Gist dealer does not have the item in your chosen color, the Gist artisans can create your selection immediately.



alder with ball

sku: ALSTR-BALL
height: 47 in.
width: 32 in.
depth: 32 in.
weight: 488 lbs.
color shown: absolute

alaster



sku: ALSTR
height: 30 in.
width: 32 in.
depth: 32 in.
weight: 431 lbs.
color shown: absolute

nova



sku: NVAF
height: 44 in.
width: 52 in.
depth: 52 in.
weight: 685 lbs.
color shown: orlona

scallop monolith



sku: SMON
height: 56 in.
width: 32 in.
depth: 32 in.
weight: 315 lbs.
color shown: sierra

ARTFUL SUGGESTION

Fountains really command attention in a space, so don't hide your fountain. Use your fountain to create a point of interest outside the front door of your home, or make the fountain a destination for a garden path.

daccapo



sku: DCCP
height: 48 in.
width: 48 in.
depth: 28.5 in.
weight: 650 lbs.
color shown: sierra

ribbed monolith



sku: RMON
height: 54 in.
width: 32 in.
depth: 32 in.
weight: 315 lbs.
color shown: ancient

zig zag



sku: ZGZG
height: 64 in.
width: 46 in.
depth: 35 in.
weight: 300 lbs.
color shown: sierra



vortex



sku: VRTX
height: 50 in.
width: 42 in.
depth: 42 in.
weight: 507 lbs.
color shown: sierra

◀ twelve-side

sku: TWLV
height: 42 in.
width: 42 in.
depth: 42 in.
weight: 310 lbs.
color shown: sierra

falls fountain



sku: FLLS
height: 27 in.
width: 46 in.
depth: 35 in.
weight: 250 lbs.
color shown: atri

athena



sku: ATHE
height: 61 in.
width: 32 in.
depth: 32 in.
weight: 149 lbs.
color shown: sierra

bello



sku: BELLO
height: 67 in.
width: 48 in.
depth: 48 in.
weight: 435 lbs.
color shown: ancient



vortex with ball

| | |
|--------------|-----------|
| sku: | VTRX-BALL |
| height: | 65 in. |
| width: | 42 in. |
| depth: | 42 in. |
| weight: | 557 lbs. |
| color shown: | sierra |



flourish

sku: FLRSH
height: 62 in.
width: 43 in.
depth: 43 in.
weight: 315 lbs.
color shown: heavy sierra

trophy



sku: TRPH
height: 51 in.
width: 29 in.
depth: 29 in.
weight: 900 lbs.
color shown: chestnut

rocket



sku: RCKT
height: 53 in.
width: 32 in.
depth: 32 in.
weight: 300 lbs.
color shown: absolute

guillotine



sku: GLLTN
height: 46 in.
width: 32 in.
depth: 22 in.
weight: 550 lbs.
color shown: chestnut

saucer



sku: SCRF
height: 42 in.
width: 43 in.
depth: 43 in.
weight: 459 lbs.
color shown: sierra

canister



sku: CANF
height: 52 in.
width: 36 in.
depth: 36 in.
weight: 310 lbs.
color shown: absolute

hiearchy



sku: HRCHY
height: 53 in.
width: 35 in.
depth: 46 in.
weight: 600 lbs.
color shown: rustic

vertical canyon



sku: VRCY
height: 63 in.
width: 36 in.
depth: 24 in.
weight: 400 lbs.
color shown: custom
NOTE: This is a wall fountain.

art



sku: ARPF
height: 51 in.
width: 25 in.
depth: 12 in.
weight: 231 lbs.
color shown: sierra
NOTE: This is a wall fountain.

honey pot



sku: HNPF
height: 56 in.
width: 25 in.
depth: 24 in.
weight: 172 lbs.
color shown: standard
NOTE: This is a wall fountain.



◀ moon

sku: MNFTN
height: 57 in.
width: 30 in.
depth: 18 in.
weight: 337 lbs.
color shown: sierra
NOTE: This is a wall fountain.

bell



sku: BELLF
height: 22 in.
width: 36 in.
depth: 36 in.
weight: 362 lbs.
color shown: charcoal



spindle

| | |
|--------------|--------------|
| sku: | SPNF |
| height: | 48 in. |
| width: | 36 in. |
| depth: | 36 in. |
| weight: | 494 lbs. |
| color shown: | dark ancient |



block with ball

sku: BLKF-BALL
height: 40 in.
width: 32 in.
depth: 32 in.
weight: 257 lbs.
color shown: sierra

monolith with ball



sku: MONF-BALL
height: 73 in.
width: 32 in.
depth: 32 in.
weight: 388 lbs.
color shown: sierra

monolith



sku: MONFL
height: 59 in.
width: 32 in.
depth: 32 in.
weight: 338 lbs.
color shown: sierra

block



sku: BLKF
height: 26 in.
width: 32 in.
depth: 32 in.
weight: 214 lbs.
color shown: sierra

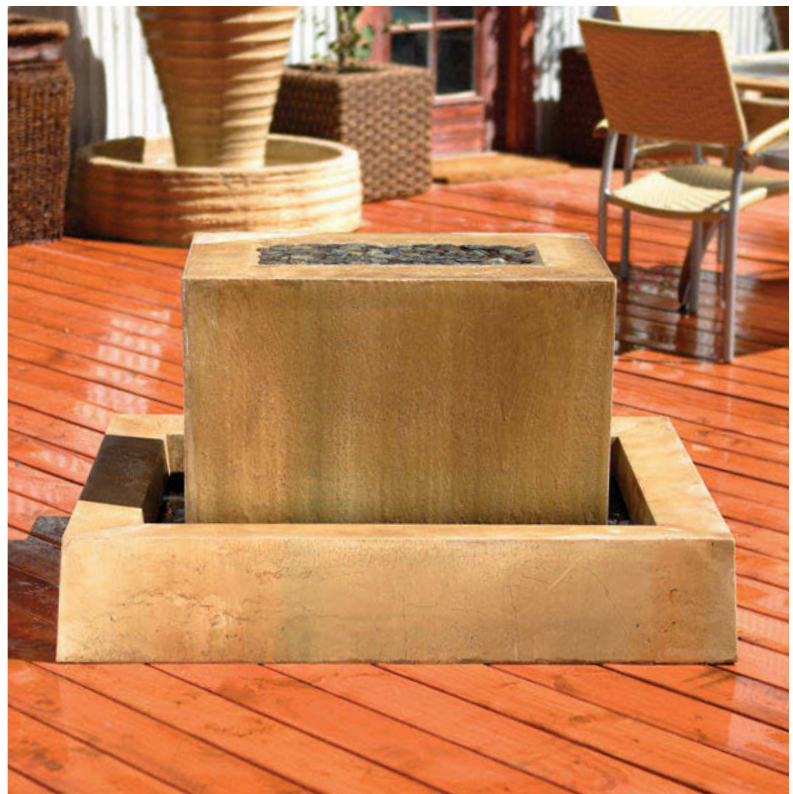
linear ►

sku: LINF
height: 27 in.
width: 46 in.
depth: 35 in.
weight: 250 lbs.
color shown: sierra
available with 18" sphere

joli



sku: JOLI
height: 28 in.
width: 32 in.
depth: 32 in.
weight: 400 lbs.
color shown: charcoal/black



obtuse



sku: OBTF
height: 26 in.
width: 32 in.
depth: 32 in.
weight: 220 lbs.
color shown: sierra

double obtuse



sku: OBTFDF
height: 42 in.
width: 32 in.
depth: 32 in.
weight: 260 lbs.
color shown: sierra

obtuse with ball



sku: OBTF-BALL
height: 44 in.
width: 32 in.
depth: 32 in.
weight: 270 lbs.
color shown: sierra



◀ fountain squared

sku: OBTCF
height: 41.5 in.
width: 20 in.
depth: 20 in.
weight: 178 lbs.
color shown: sierra

ARTFUL SUGGESTION

Carry over the look and feel of your Gist fountain to other areas of your patio or yard. For example, arrange Jug Planters throughout your space to compliment the Tri-Level Jug Fountain you've selected.



double obtuse
with ball

| | |
|--------------|------------|
| sku: | OBTDF-BALL |
| height: | 58 in. |
| width: | 32 in. |
| depth: | 32 in. |
| weight: | 310 lbs. |
| color shown: | sierra |



double oblique
with ball

sku: OBDf-BALL
height: 64 in.
width: 43 in.
depth: 43 in.
weight: 576 lbs.
color shown: sierra

double oblique



sku: OBDP
height: 50 in.
width: 43 in.
depth: 43 in.
weight: 526 lbs.
color shown: sierra

oblique with ball



| | small | large |
|--------------|--------------|--------------|
| sku: | OBSF-BALL | OBLF-BALL |
| height: | 42 in. | 65 in. |
| width: | 32 in. | 43 in. |
| depth: | 32 in. | 43 in. |
| weight: | 382 lbs. | 517 lbs. |
| color shown: | sierra | |

oblique



| | small | large |
|--------------|--------------|--------------|
| sku: | OBSF | OBLF |
| height: | 25 in. | 36 in. |
| width: | 32 in. | 43 in. |
| depth: | 32 in. | 43 in. |
| weight: | 332 lbs. | 379 lbs. |
| color shown: | sierra | |

tower ►

sku: TWRF
height: 58 in.
width: 35 in.
depth: 34 in.
weight: 496 lbs.
color shown: desert rose



obelisk fountain



sku: EGYF
height: 57 in.
width: 32 in.
depth: 32 in.
weight: 197 lbs.
color shown: dark ancient

i with ball



sku: *IIIF-BALL*
 height: 73 in.
 width: 32 in.
 depth: 32 in.
 weight: 264 lbs.
 color shown: ancient (i)/sierra (ball)

i



sku: *IIIF*
 height: 59 in.
 width: 32 in.
 depth: 32 in.
 weight: 214 lbs.
 color shown: ancient

spire with ball



sku: *SPIF-BALL*
 height: 73 in.
 width: 21 in.
 depth: 21 in.
 weight: 421 lbs.
 color shown: desert rose

ARTFUL SUGGESTION

The colors of your yard or garden are of your own choosing. Your fountain selection isn't limited to design only. You pick the color. The Gist Color Palette allows you to select a color which compliments your fountain's surroundings.

mini i with ball



sku: *IIIFMINI-BALL*
 height: 59 in.
 width: 32 in.
 depth: 32 in.
 weight: 336 lbs.
 color shown: amatrice

mini i



sku: *IIIF-MINI*
 height: 47 in.
 width: 32 in.
 depth: 32 in.
 weight: 321 lbs.
 color shown: popoli

spire



sku: *SPIF*
 height: 59 in.
 width: 21 in.
 depth: 21 in.
 weight: 378 lbs.
 color shown: desert rose



square scallop

sku: SQSC
height: 60 in.
width: 32 in.
depth: 32 in.
weight: 310 lbs.
color shown: ancient



round scallop

sku: RDSC
height: 60 in.
width: 36 in.
depth: 36 in.
weight: 210 lbs.
color shown: ancient

jug



sku: JUG
height: 30 in.
width: 36 in.
depth: 36 in.
weight: 370 lbs.
color shown: sierra

bi-level jug



sku: BI-JUG-N
height: 50 in.
width: 36 in.
depth: 36 in.
weight: 440 lbs.
color shown: sierra

bi-level jug with planter



sku: BI-JUG
height: 50 in.
width: 36 in.
depth: 36 in.
weight: 440 lbs.
color shown: sierra

tri-level jug with planter ►

sku: TRI-JUG
height: 63.5 in.
width: 36 in.
depth: 36 in.
weight: 490 lbs.
color shown: sierra

ARTFUL SUGGESTION

Gist fountains aren't just for the backyard. Place a Ball and Bowl Fountain at the center of a circular driveway, or place matching fountains at either side of the entrance to your property to increase curb appeal.





steam



sku: STMFTN
height: 55 in.
width: 36 in.
depth: 36 in.
weight: 400 lbs.
color shown: sierra

◀ large olive jar

sku: OLLJF
height: 56 in.
width: 42 in.
depth: 42 in.
weight: 727 lbs.
color shown: sierra

small olive jar



sku: OLSJF
height: 45 in.
width: 35 in.
depth: 35 in.
weight: 453 lbs.
color shown: sierra

ripple vase



sku: OLMJF
height: 42 in.
width: 42 in.
depth: 42 in.
weight: 524 lbs.
color shown: ancient

greek fountain



sku: GRKJF
height: 30 in.
width: 24 in.
depth: 24 in.
weight: 152 lbs.
color shown: ancient



amphora fountain

| | |
|--------------|----------|
| sku: | AMPH-FTN |
| height: | 41 in. |
| width: | 35 in. |
| depth: | 35 in. |
| weight: | 343 lbs. |
| color shown: | sierra |



genie

sku: GENIF
height: 52 in.
width: 48 in.
depth: 48 in.
weight: 232 lbs.
color shown: custom

large vase with wok



sku: VSLF-WOK
height: 61.75 in.
width: 48 in.
depth: 48 in.
weight: 603 lbs.
color shown: ancient
available as vessel only (VSLF)

small vase



sku: VSSF
height: 45 in.
width: 32 in.
depth: 32 in.
weight: 279 lbs.
color shown: desert rose

mini vase



sku: VSMF
height: 35 in.
width: 24 in.
depth: 24 in.
weight: 152 lbs.
color shown: dark ancient

trunk ►

sku: TRNK-FTN
height: 51 in.
width: 42 in.
depth: 42 in.
weight: 715 lbs.
color shown: sierra



merritt



sku: MERRI
height: 31 in.
width: 24 in.
depth: 24 in.
weight: 320 lbs.
color shown: celano

eminent



sku: EMNT
height: 55.25 in.
width: 23 in.
depth: 23 in.
weight: 294 lbs.
color shown: ancient

marinus



sku: MRNS
height: 48 in.
width: 14.5 in.
depth: 14.5 in.
weight: 248 lbs.
color shown: sierra
*Includes Scrolls on bottom of Ball
(not pictured)*

liveo



sku: LIVO
height: 48 in.
width: 27 in.
depth: 27 in.
weight: 596 lbs.
color shown: chestnut



◀ venetian

sku: VNTN
height: 45 in.
width: 52 in.
depth: 52 in.
weight: 600 lbs.
color shown: sierra

ARTFUL SUGGESTION

Surround your fountain with foliage, and enjoy the textured sounds of the water flowing in the shade of a grape or jasmine canopy. The sunlight will penetrate the vines, sprinkling the fountain with cooling shadows and sparkling highlights.



cresere

| | |
|--------------|----------|
| sku: | CRSR |
| height: | 58 in. |
| width: | 24 in. |
| depth: | 24 in. |
| weight: | 369 lbs. |
| color shown: | absolute |



drum with ball

sku: DRUMF-BALL
height: 57 in.
width: 36 in.
depth: 36 in.
weight: 565 lbs.
color shown: sierra

buddha head fountain (large)



sku: BHEAD-FTN-LARGE
 height: 38 in.
 width: 75 in.
 depth: 29 in.
 weight: 314 lbs.
 color shown: rod bronze

drum



sku: DRUMF
 height: 45 in.
 width: 36 in.
 depth: 36 in.
 weight: 515 lbs.
 color shown: sierra

hybrid 3-part



sku: HYBRD-3
 height: 54 in.
 width: 24 in.
 depth: 65 in.
 weight: 465 lbs.
 color shown: rod bronze

hybrid 2-part



sku: HYBRD-2
 height: 36 in.
 width: 20 in.
 depth: 42 in.
 weight: 265 lbs.
 color shown: rod bronze

buddha fountain



sku: BUDF
height: 50 in.
width: 31 in.
depth: 17 in.
weight: 244 lbs.
color shown: ancient
NOTE: This is a wall fountain.

carafe



sku: MKJF
height: 65 in.
width: 29 in.
depth: 30 in.
weight: 343 lbs.
color shown: standard
NOTE: This is a wall fountain.

water trough



sku: WTR-TRGH
height: 61 in.
width: 48 in.
depth: 18 in.
weight: 441 lbs.
color shown: sierra



◀ lion

sku: LONF
height: 60 in.
width: 34 in.
depth: 18 in.
weight: 240 lbs.
color shown: standard
NOTE: This is a wall fountain.

ARTFUL SUGGESTION

Suppose your entry way appears too narrow to furnish. Consider a wall fountain. Wall fountains are space-savers. They do so much in hallways to convert a traffic area into your favorite part of the house.



buddha head
fountain (small)

| | |
|--------------|-----------------|
| sku: | BHEAD-FTN-SMALL |
| height: | 40 in. |
| width: | 32 in. |
| depth: | 32 in. |
| weight: | 304 lbs. |
| color shown: | sierra |



servius

sku: SRVS
height: 60 in.
width: 32 in.
depth: 23 in.
weight: 383 lbs.
color shown: celano

ion



sku: INFN
height: 53 in.
width: 27 in.
depth: 27 in.
weight: 167 lbs.
color shown: popoli

tagai



sku: TGAF
height: 59 in.
width: 23 in.
depth: 23 in.
weight: 500 lbs.
color shown: arlona

lady



sku: LDYF
height: 51 in.
width: 32 in.
depth: 32 in.
weight: 172 lbs.
color shown: ancient

pillar ►

sku: PLLR-FTN
height: 48 in.
width: 33 in.
depth: 33 in.
weight: 277 lbs.
color shown: atri
*NOTE: Width/depth
measures bowl section.*



augusta



sku: AGSTA
height: 48 in.
width: 24 in.
depth: 24 in.
weight: 191 lbs.
color shown: celano

ball and bowl



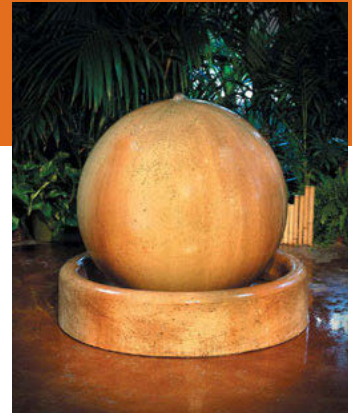
sku: 48F/WLKP-72
height: 59 in.
width: 72 in.
depth: 72 in.
weight: 1310 lbs.
color shown: custom

ball and wok



sku: 30F/WLKP-48
height: 34 in.
width: 48 in.
depth: 48 in.
weight: 260 lbs.
color shown: sierra

ball and ring base



sku: 30F/BFBASE
height: 36 in.
width: 36 in.
depth: 36 in.
weight: 423 lbs.
color shown: desert rose

ARTFUL SUGGESTION

Light is a compliment to any Gist fountain. Sunshine or the glow of a thoughtfully positioned light will accentuate the motion of the water traveling over the fountain's surface. The sight and sounds of the elements working in orchestra can be dramatic.

mini rubix and wok



sku: RUBF-MINI
height: 23.25 in.
width: 36 in.
depth: 36 in.
weight: 136 lbs.
color shown: atri

NOTE: Available with 18 in. riser.

small wok with pedestal



sku: SMWOK-PED
height: 21.25 in.
width: 24 in. (wok) 12 in. (pedestal)
depth: 24 in. (wok) 12 in. (pedestal)
weight: 65 lbs.
color shown: amatrice

rubix and wok



sku: RUBF
height: 40 in.
width: 48 in.
depth: 48 in.
weight: 296 lbs.
color shown: sierra



rubix and wok
with riser

| | |
|--------------|----------|
| sku: | RUBF-R |
| height: | 52 in. |
| width: | 48 in. |
| depth: | 48 in. |
| weight: | 316 lbs. |
| color shown: | sierra |



tuscan with riser

sku: TUS-W-RISER
height: 40 in.
width: 48 in.
depth: 48 in.
weight: 296 lbs.
color shown: armatrice

colonial



sku: COLO-FTN
height: 48 in.
width: 44 in.
depth: 44 in.
weight: 520 lbs.
color shown: celano

fiore



sku: FIO-FTN
height: 52 in.
width: 15 in.
depth: 33.5 in.
weight: 410 lbs.
color shown: sierra

pompei



sku: POM-FTN
height: 50 in.
width: 48 in.
depth: 26 in.
weight: 750 lbs.
color shown: absolute

ridgeway ▶

sku: RID-FTN
height: 50 in.
width: 33 in.
depth: 33 in.
weight: 490 lbs.
color shown: popoli



tuscany without riser



sku: TUS-WO-RISER
height: 40 in.
width: 48 in.
depth: 48 in.
weight: 296 lbs.
color shown: armatrice

canal bench



sku: CAN
height: 32 in.
width: 63 in.
depth: 32 in.
weight: 455 lbs.
color shown: Absolute

NOTE: Dimensions and weight per piece

moris bench



sku: MOR
height: 18 in.
width: 58 in.
depth: 20 in.
weight: 330 lbs.
color shown: absolute

gist bench



sku: BENCH
height: 18 in.
width: 56 in.
depth: 20 in.
weight: 175 lbs.
color shown: chestnut

vienna bench



sku: VIE
height: 16 in.
width: 68 in.
depth: 16 in.
weight: 300 lbs.
color shown: ash gray

vaci bench



sku: VACI
height: 16 in.
width: 72 in.
depth: 16 in.
weight: 215 lbs.
color shown: sierra

geneva bench



sku: GENE
height: 23 in.
width: 59.5 in.
depth: 24 in.
weight: 325 lbs.
color shown: ancient

veneto bench



sku: VEN
height: 32 in.
width: 72 in.
depth: 32 in.
weight: 430 lbs.
color shown: rustic

avalon bench



sku: AVA
height: 32 in.
width: 59.5 in.
depth: 24.5 in.
weight: 380 lbs.
color shown: ancient



dixie grill

sku: DIX
height: 48 in.
width: 70 in.
depth: 24 in.
weight: 226 lbs.
color shown: absolute

NOTE: Gas grill and doors
not included.

gianni grill



sku: GIA
height: 39 in.
width: 73 in.
depth: 24 in.
weight: 307 lbs.
color shown: absolute

NOTE: Gas grill and doors
not included.

fornata bar



sku: FOR
height: 38 in.
width: 73 in.
depth: 24 in.
weight: 257 lbs.
color shown: absolute



ARTFUL SUGGESTION

Gist designs bar and grilling furniture with compatibility in mind. They accommodate top brand grill and door manufacturers. Contact us for more details.



piada bar

sku: PIA
height: 48 in.
width: 70 in.
depth: 24 in.
weight: 226 lbs.
color shown: popoli



buddha head
sculpture - XL

sku: BHEAD-XL
height: 72 in.
width: 48 in.
depth: 48 in.
weight: 450 lbs.
color shown: popoli



◀ buddha head sculpture - large/small

sku: BHEAD-LARGE
 height: 46 in.
 width: 27 in.
 depth: 21 in.
 weight: 200 lbs.

sku: BHEAD
 height: 30 in.
 width: 15 in.
 depth: 16 in.
 weight: 89 lbs.

color shown: sierra

NOTE: Pedestal sold separately.
 Small Buddha head shown.

big buddha sculpture



sku: BUDDHA
 height: 77 in.
 width: 55 in.
 depth: 40 in.
 weight: 300 lbs.
 color shown: Absolute

sitting buddha sculpture



sku: BUDS
 height: 31 in.
 width: 29 in.
 depth: 18 in.
 weight: 105 lbs.
 color shown: sierra
 NOTE: Pedestal sold separately.

obelisk statue



sku: EGYF-ST
 height: 49 in.
 width: 12 in.
 depth: 12 in.
 weight: 115 lbs.
 color shown: dark ancient

caspian table



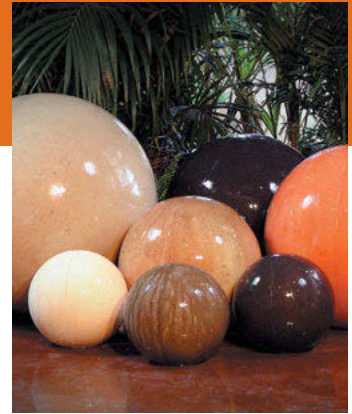
sku: CASP
height: 13.5 in.
width: 28 in.
depth: 28 in.
weight: 254 lbs.
color shown: Rustic

ampohora pedestal



sku: AMPH-PED
height: 21.5 in.
width: 11.5 in.
depth: 11.5 in.
weight: 40 lbs.
color shown: sierra

spheres



| | |
|-----------------|-----------------|
| sku: | BALL |
| dia./wt. | dia./wt. |
| 30 in./138 lbs. | 12 in./22 lbs. |
| 36 in./160 lbs. | 18 in./43 lbs. |
| 48 in./300 lbs. | 24 in./100 lbs. |
| color shown: | assorted |



◀ tiki statue - small

sku: TKKI-S
height: 96 in.
width: 34 in.
depth: 11 in.
weight: 800 lbs.
color shown: absolute

ARTFUL SUGGESTION

Tiki statues by Gist establish a polynesian theme as courtyard centerpieces or garden accents—but they don't just look good outside. Decorate with a Gist Tiki indoors.



tiki statue - large

sku: TKKI-L
height: 144 in.
width: 34 in.
depth: 11 in.
weight: 900 lbs.
color shown: absolute



dalton planter

sku: DAL
height: 27 in.
width: 11 in.
depth: 11 in.
weight: 91 lbs.
color shown: celano

alora planter



sku: AL
height: 8 in.
width: 24 in.
depth: 7 in.
weight: 25 lbs.
color shown: chestnut

bliss planter



sku: BLI
height: 17 in.
width: 27 in.
depth: 17 in.
weight: 91 lbs.
color shown: popoli

corso planter



sku: COR
height: 27 in.
width: 18 in.
depth: 15 in.
weight: 60 lbs.
color shown: absolute

augusto planter ►

sku: AUGU
height: 12 in.
width: 18 in.
depth: 14 in.
weight: 20 lbs.
color shown: popoli

ARTFUL SUGGESTION

Planters like Gist's Dalton or Corso planters are beautiful by themselves, but don't miss an opportunity to accent an entrance with a pair of planters or create a dramatic approach to a home or business with rows of planters, leading visitors to the front door.



doloroga planter



sku: DOLO
height: 17 in.
width: 42 in.
depth: 42 in.
weight: 282 lbs.
color shown: rustic

fermi planter



sku: FER
height: 12 in.
width: 45 in.
depth: 45 in.
weight: 286 lbs.
color shown: agnone

mazzini planter



sku: MAZZ
height: 17 in.
width: 26 in.
depth: 22 in.
weight: 45 lbs.
color shown: absolute



◀ madrid planters

small
sku: MADR-S
height: 18 in.
width: 37 in.
depth: 37 in.
weight: 150 lbs.
color shown: wheat

large
sku: MADR-L
height: 24 in.
width: 43 in.
depth: 43 in.
weight: 215 lbs.
color shown: wheat

ARTFUL SUGGESTION

Many of our planter designs and finishes match our fountains, benches and bars. Decorate patios, pool areas and yards with Gist products, which are designed to match.



madison planter

sku: MADI
height: 31 in.
width: 24 in.
depth: 24 in.
weight: 74 lbs.
color shown: chestnut



preston planter

sku: PRES
height: 37 in.
width: 25 in.
depth: 25 in.
weight: 210 lbs.
color shown: XXXX

oblique planters



| | medium | large |
|--------------|---------------|--------------|
| sku: | OBMP | OBLP |
| height: | 20 in. | 25 in. |
| width: | 26 in. | 44 in. |
| depth: | 26 in. | 44 in. |
| weight: | 162 lbs. | 210 lbs. |
| color shown: | ancient | |

sacra planter



| | |
|--------------|----------|
| sku: | SAC |
| height: | 35 in. |
| width: | 54 in. |
| depth: | 30 in. |
| weight: | 346 lbs. |
| color shown: | absolute |

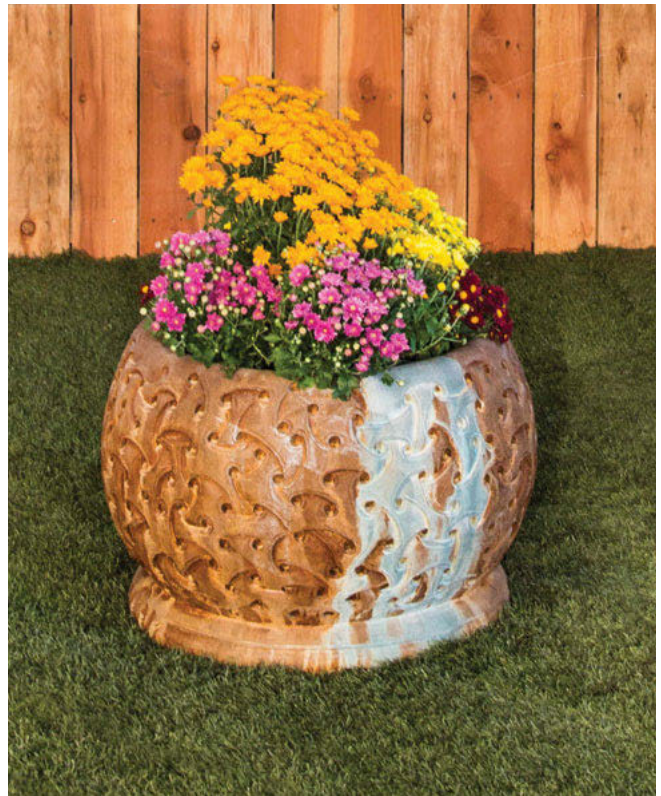
sienna planter



| | small | large |
|--------------|--------------|--------------|
| sku: | SIE-S | SIE-L |
| height: | 13 in. | 20 in. |
| width: | 50 in. | 60 in. |
| depth: | 50 in. | 60 in. |
| weight: | 150 lbs. | 250 lbs. |
| color shown: | taupe | taupe |

weave planter ►

| | |
|--------------|----------|
| sku: | WEA |
| height: | 17 in. |
| width: | 25 in. |
| depth: | 25 in. |
| weight: | 303 lbs. |
| color shown: | atri |



ARTFUL SUGGESTION

Gist designs planters of varying height, allowing you to show the color and texture of your flowers and plants at every level. Let the beauty of your plants and flowers show from head to toe.

harvest planter



sku: HRVP
height: 27 in.
width: 22 in.
depth: 22 in.
weight: 160 lbs.
color shown: custom

wok planter with pedestal



| | small | large |
|--------------|--------------|--------------|
| sku: | WLKP-24 | WLKP-32 |
| height: | 9 in. | 12 in. |
| width: | 24 in. | 32 in. |
| depth: | 24 in. | 32 in. |
| weight: | 75 lbs. | 85 lbs. |
| color shown: | ancient | |

classic wall planter



sku: GRMB
height: 34 in.
width: 34 in.
depth: 20 in.
weight: 200 lbs.
color shown: ancient



◀ ovate planter

sku: OVTP
height: 18 in.
width: 24 in.
depth: 24 in.
weight: 146 lbs.
color shown: custom

ARTFUL SUGGESTION

Gist's Classic Wall Planter allows you to bring color and texture into walkways, patios, courtyards and hallways, where you want the beauty planted without giving up precious space or getting in the way.



greek planter

| | |
|--------------|---------|
| sku: | GREP |
| height: | 24 in. |
| width: | 19 in. |
| depth: | 19 in. |
| weight: | 64 lbs. |
| color shown: | ancient |



venetian planter

sku: VNTN-PL
height: 35.5 in.
width: 27 in.
depth: 27 in.
weight: 254 lbs.
color shown: chestnut

magestic planter - large



sku: MJSP-LG
height: 31.5 in.
width: 44 in.
depth: 44 in.
weight: 400 lbs.
color shown: trasacco

magestic planter - medium



sku: MJSP-MD
height: 19 in.
width: 36 in.
depth: 36 in.
weight: 264 lbs.
color shown: trasacco

magestic planter - small



sku: MJSP-SM
height: 17 in.
width: 43.5 in.
depth: 43.5 in.
weight: 200 lbs.
color shown: trasacco

teacup planter ►

sku: TCPP
height: 13 in.
width: 24 in.
depth: 24 in.
weight: 106 lbs.
color shown: atri



ARTFUL SUGGESTION

Magestic planters provide matching opportunities to bring in color to any space and at any level. Place large Magestic planters on the ground to bring flowers and foliage closer to the eye. Put small Magestic planters up high without ruining long vistas.

dolabra planter



sku: DOLB-PL
height: 21 in.
width: 16 in.
depth: 16 in.
weight: 119 lbs.
color shown: rustic

amphora planter



sku: AMPH-PL
height: 60 in.
width: 20 in.
depth: 20 in.
weight: 114 lbs.
color shown: sierra

mungo planter



sku: MNPL
height: 33.5 in.
width: 44 in.
depth: 30 in.
weight: 600 lbs.
color shown: red rock



◀ quirnali planters

| | small | large |
|--------------|--------------|--------------|
| sku: | QRNLI-S | QRNLI-L |
| height: | 22 in. | 33 in. |
| width: | 12.5 in. | 19 in. |
| depth: | 12.5 in. | 19 in. |
| weight: | 82 lbs. | 103 lbs. |
| color shown: | celano | |

ARTFUL SUGGESTION

Gist planters with a tall, slender profile are perfect for leggy plants, whose tendrils can extend toward the ground and show their blossoms beyond the tip-top of the planter. The Quirnali planter's broad top lip is perfect for plants, that light to hang.



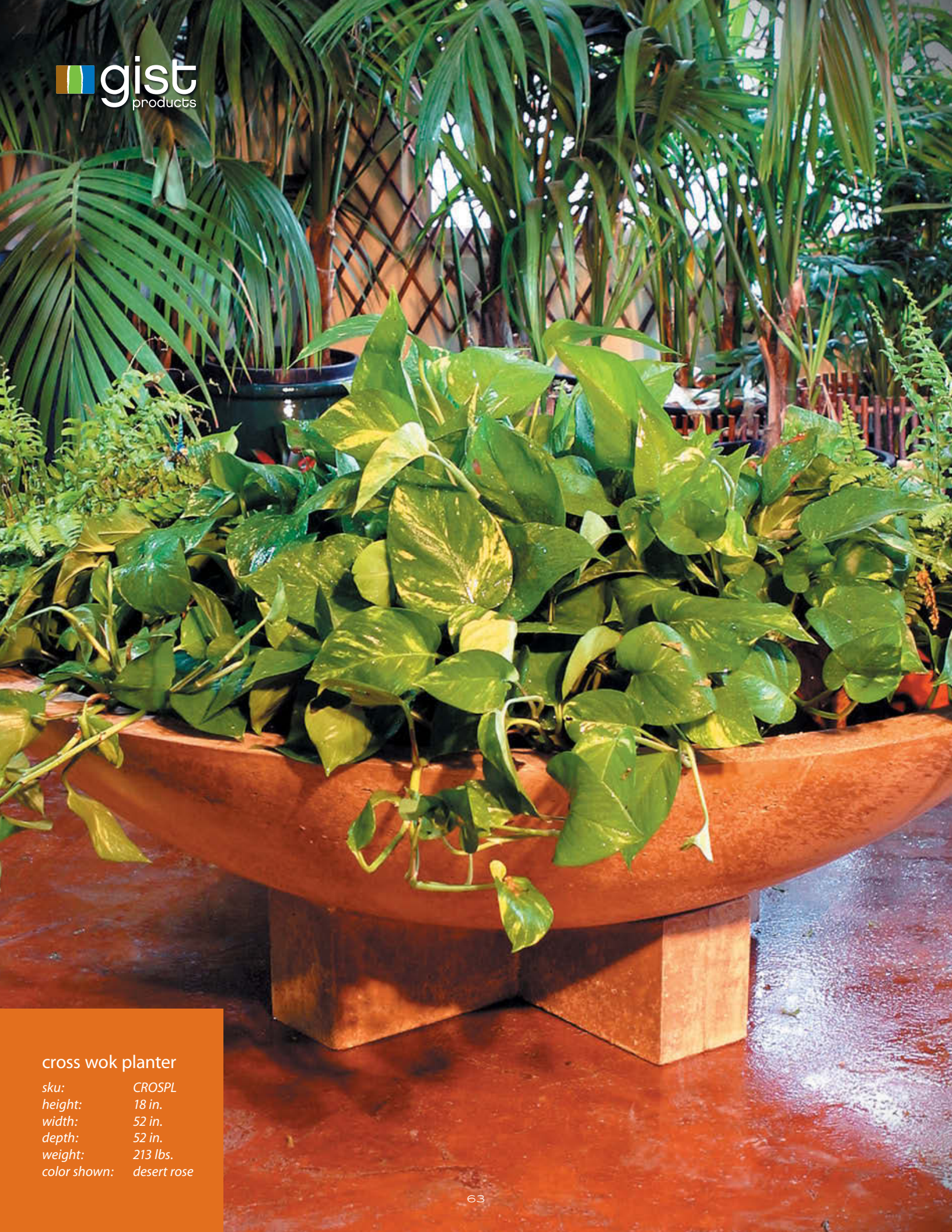
jug planters

sku: JUG-LG
height: 30.5 in.
width: 24.5 in.
weight: 85 lbs.

sku: JUG-MD
height: 22.5 in.
width: 22 in.
weight: 80 lbs.

sku: JUG-SM
height: 15 in.
width: 18 in.
weight: 40 lbs.

color shown: sierra



cross wok planter

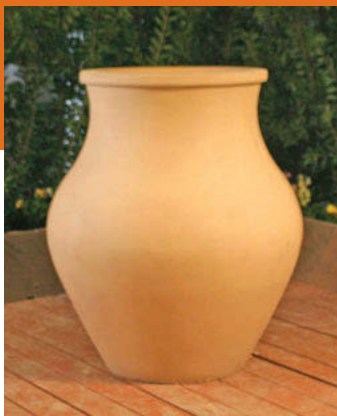
sku: CROSPL
height: 18 in.
width: 52 in.
depth: 52 in.
weight: 213 lbs.
color shown: desert rose

taranto planter



sku: TRNT-40
height: 40 in.
width: 40 in.
depth: 40 in.
weight: 300 lbs.
color shown: straw

napoli planter



sku: NPLI-44
height: 44 in.
width: 38 in.
depth: 38 in.
weight: 400 lbs.
color shown: straw

prato planter



sku: PRTO-60
height: 60 in.
width: 40 in.
depth: 40 in.
weight: 500 lbs.
color shown: red rock

wok planters ►

| | | |
|--------------|----------|---------|
| sku: | SMWK-24 | WKLP-36 |
| height: | 6 in. | 8.5 in. |
| width: | 24 in. | 36 in. |
| depth: | 24 in. | 36 in. |
| weight: | 26 lbs. | 67 lbs. |
| color shown: | sea salt | |

NOTE: Available in 48 in. and 60 in.



index

fountains

| | | | | | |
|---|----|--------------------------------------|----|--|----|
| <i>alaster</i> | .6 | <i>falls fountain</i> | .7 | <i>moon</i> | 11 |
| <i>alaster with ball</i> | .5 | <i>fiore</i> | 38 | <i>nova</i> | .6 |
| <i>amphora fountain</i> | 24 | <i>flourish</i> | .9 | <i>obelisk fountain</i> | 18 |
| <i>art</i> | 11 | <i>fountain squared</i> | 15 | <i>oblique - small and large</i> | 18 |
| <i>athena</i> | .7 | <i>genie</i> | 25 | <i>oblique with ball - small and large</i> | 18 |
| <i>augusta</i> | 34 | <i>greek fountain</i> | 23 | <i>obtuse</i> | 15 |
| <i>ball and bowl</i> | 35 | <i>guillotine</i> | 10 | <i>obtuse with ball</i> | 15 |
| <i>ball and ring base</i> | 35 | <i>hiearchy</i> | 10 | <i>olive jar - large</i> | 23 |
| <i>ball and wok</i> | 35 | <i>honey pot</i> | 11 | <i>olive jar - small</i> | 23 |
| <i>bell</i> | 11 | <i>hybrid 2-part</i> | 30 | <i>pillar</i> | 34 |
| <i>bello</i> | .7 | <i>hybrid 3-part</i> | 30 | <i>pompei</i> | 38 |
| <i>bi-level jug</i> | 22 | <i>i</i> | 19 | <i>ribbed monolith</i> | .6 |
| <i>bi-level jug with planter</i> | 22 | <i>i with ball</i> | 19 | <i>ridgeway</i> | 38 |
| <i>block</i> | 14 | <i>i with fire</i> | .4 | <i>ripple vase</i> | 23 |
| <i>block with ball</i> | 13 | <i>ion</i> | 34 | <i>rocket</i> | 10 |
| <i>buddha fountain</i> | 31 | <i>joli</i> | 14 | <i>round scallop</i> | 21 |
| <i>buddha head fountain - large</i> | 30 | <i>jug</i> | 22 | <i>rubix and wok</i> | 35 |
| <i>buddha head fountain - small</i> | 32 | <i>lady</i> | 34 | <i>rubix and wok with riser</i> | 36 |
| <i>canister</i> | 10 | <i>large vase with wok</i> | 26 | <i>saucer</i> | 10 |
| <i>carafe</i> | 31 | <i>linear</i> | 14 | <i>scallop monolith</i> | .6 |
| <i>colonial</i> | 38 | <i>lion</i> | 31 | <i>servius</i> | 33 |
| <i>cresere</i> | 28 | <i>liveo</i> | 27 | <i>small vase</i> | 26 |
| <i>daccapo</i> | .6 | <i>marinus</i> | 27 | <i>small wok with pedestal</i> | 35 |
| <i>double oblique</i> | 18 | <i>merritt</i> | 26 | <i>spindle</i> | 12 |
| <i>double oblique with ball</i> | 17 | <i>mini i</i> | 19 | <i>spire</i> | 19 |
| <i>double obtuse</i> | 15 | <i>mini i with ball</i> | 19 | <i>spire with ball</i> | 19 |
| <i>double obtuse with ball</i> | 16 | <i>mini rubix and wok</i> | 35 | <i>square scallop</i> | 20 |
| <i>drum with ball</i> | 29 | <i>mini vase</i> | 26 | <i>steam</i> | 23 |
| <i>drum</i> | 30 | <i>monolith</i> | 14 | <i>tagai</i> | 34 |
| <i>eminent</i> | 27 | <i>monolith with ball</i> | 14 | <i>tower</i> | 18 |

| | |
|--------------------------------------|----|
| tri-level jug with planter | 22 |
| trophy | 10 |
| trunk. | 26 |
| tuscany with riser | 37 |
| tuscany without riser | 38 |
| twelve side. | .7 |
| venetian fountain | 27 |
| vertical canyon | 11 |
| vortex | .7 |
| vortex with ball | .8 |
| water trough. | 31 |
| zig zag fountain | .6 |

planters

| | |
|-------------------------------|----|
| alora planter. | 52 |
| amphora planter | 61 |
| augusto planter | 52 |
| bliss planter | 52 |
| classic wall planter. | 57 |
| corso planter. | 52 |
| cross wok planter | 63 |
| dalton planter | 51 |
| dolabra planter | 61 |
| doloroga planter. | 53 |
| fermi planter. | 53 |
| greek planter | 58 |
| harvest planter | 57 |
| jug planters | 62 |
| wok planters. | 46 |
| madison planter. | 54 |

| | |
|-----------------------------|----|
| madrid planters | 53 |
| majestic planters | 60 |
| mazzini planter | 42 |
| mungo planter. | 61 |
| napoli planter | 64 |
| oblique planters | 56 |
| ovate planter | 57 |
| preston planter | 55 |
| prato planter. | 64 |
| quirnali planters. | 61 |
| sacra planters | 56 |
| sienna planter | 56 |
| taranto planter | 64 |
| teacup planter. | 60 |
| venetian planter. | 59 |
| weave planter | 56 |
| wok planters. | 64 |

statuary

| | |
|---|----|
| big buddha sculpture | 48 |
| buddha head sculpture - small | 48 |
| buddha head sculpture - large. | 48 |
| buddha head sculpture - XL | 47 |
| obelisk statue | 48 |
| sitting buddha sculpture. | 48 |
| spheres | 49 |
| tiki statue - large. | 50 |
| tiki statue - small. | 49 |

tables and pedestals

| | |
|----------------------------|----|
| amphora pedestal | 49 |
| caspian table | 49 |

benches

| | |
|------------------------|----|
| avalon bench | 42 |
| canal bench | 39 |
| geneva bench | 41 |
| moris bench | 39 |
| gist bench | 40 |
| vaci bench | 41 |
| veneto bench | 42 |
| vienna bench | 40 |

bars and grills

| | |
|-----------------------|----|
| dixie grill. | 43 |
| fornata bar | 45 |
| gianni grill. | 44 |
| piada bar | 46 |

